

PLEASE CHECK WWW.MOLEX.COM FOR LATEST PART INFORMATION

Part Number: [0901230111](#)
Status: **Active**
Overview: [cgrid_iii](#)
Description: 2.54mm (.100") Pitch C-Grid III™ Modular Crimp Housing - Single Row, 2 Polarizing Buttons, 11 Circuits

Documents:

[Drawing \(PDF\)](#)

[RoHS Certificate of Compliance \(PDF\)](#)

General

| | |
|----------------|---------------------------|
| Product Family | Crimp Housings |
| Series | 90123 |
| Comments | 2 Polarizing Buttons |
| Overview | cgrid_iii |
| Product Name | C-Grid III™ |

Physical

| | |
|-------------------------------|-----------------|
| Circuits (maximum) | 11 |
| Color - Resin | Black |
| Gender | Female |
| Glow-Wire Compliant | No |
| Material - Resin | PPO |
| Number of Rows | 1 |
| Packaging Type | Bag |
| Panel Mount | No |
| Pitch - Mating Interface (in) | 0.100 In |
| Pitch - Mating Interface (mm) | 2.54 mm |
| Stackable | Yes |
| Temperature Range - Operating | -55°C to +105°C |

Material Info

Reference - Drawing Numbers

| | |
|---------------|----------|
| Sales Drawing | SD-90123 |
|---------------|----------|

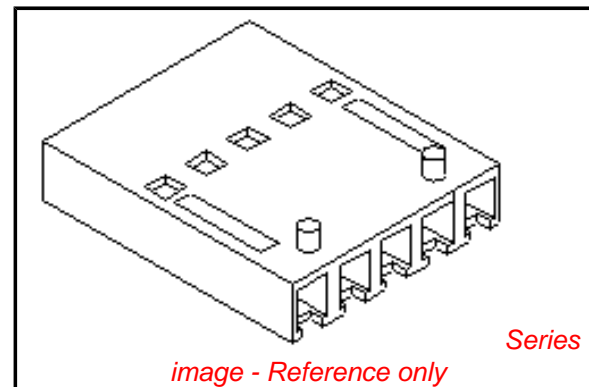


image - Reference only

EU RoHS

**ELV and RoHS
Compliant**

REACH SVHC

Not Reviewed

Halogen-Free

Status

Not Reviewed

China RoHS



**Need more information on product
environmental compliance?**

Email productcompliance@molex.com
 For a multiple part number RoHS Certificate of
 Compliance, [click here](#)

Please visit the [Contact Us](#) section for any
 non-product compliance questions.

Search Parts in this Series

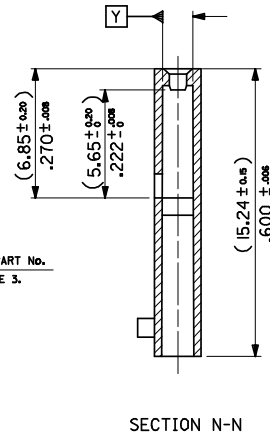
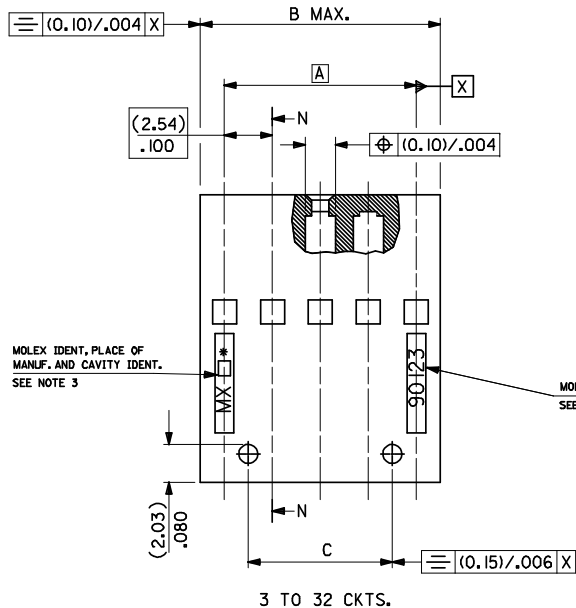
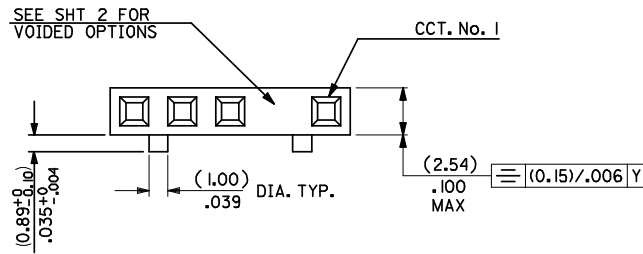
[90123Series](#)

Mates With

C-Grid III™ Header [90120](#) , [90121](#) , C-Grid
 III™ Header [90136](#)

Use With

[90119](#) C-Grid III™ Crimp Terminal



SECTION N-N
(THROUGH VOIDS
WHERE APPLICABLE)

| NO. OF CKTS | PART NUMBER | | DIM A | DIM B | DIM C |
|-------------|-------------|------------|---------------|---------------|---------------|
| | 2 BUTT'S | 4 BUTT'S | | | |
| 2 | 90123-0102 | 90123-0202 | (2.54)/0.100 | (5.08)/0.200 | --- |
| 3 | 90123-0103 | 90123-0203 | (5.08)/0.200 | (7.62)/0.300 | (2.54)/0.100 |
| 4 | 90123-0104 | 90123-0204 | (7.62)/0.300 | (10.16)/0.400 | (5.08)/0.200 |
| 5 | 90123-0105 | 90123-0205 | (10.16)/0.400 | (12.70)/0.500 | (7.62)/0.300 |
| 6 | 90123-0106 | 90123-0206 | (12.70)/0.500 | (15.24)/0.600 | (10.16)/0.400 |
| 7 | 90123-0107 | 90123-0207 | (15.24)/0.600 | (17.78)/0.700 | (12.70)/0.500 |
| 8 | 90123-0108 | 90123-0208 | (17.78)/0.700 | (20.32)/0.800 | (15.24)/0.600 |
| 9 | 90123-0109 | 90123-0209 | (20.32)/0.800 | (22.86)/0.900 | (17.78)/0.700 |
| 10 | 90123-0110 | 90123-0210 | (22.86)/0.900 | (25.40)/1.000 | (20.32)/0.800 |
| 11 | 90123-0111 | 90123-0211 | (25.40)/1.000 | (27.94)/1.100 | (22.86)/0.900 |
| 12 | 90123-0112 | 90123-0212 | (27.94)/1.100 | (30.48)/1.200 | (25.40)/1.000 |
| 13 | 90123-0113 | 90123-0213 | (30.48)/1.200 | (33.02)/1.300 | (27.94)/1.100 |
| 14 | 90123-0114 | 90123-0214 | (33.02)/1.300 | (35.56)/1.400 | (30.48)/1.200 |
| 15 | 90123-0115 | 90123-0215 | (35.56)/1.400 | (38.10)/1.500 | (33.02)/1.300 |
| 16 | 90123-0116 | 90123-0216 | (38.10)/1.500 | (40.64)/1.600 | (35.56)/1.400 |
| 17 | 90123-0117 | 90123-0217 | (40.64)/1.600 | (43.16)/1.700 | (38.10)/1.500 |
| 18 | 90123-0118 | 90123-0218 | (43.18)/1.700 | (45.72)/1.800 | (40.64)/1.600 |
| 19 | 90123-0119 | 90123-0219 | (45.72)/1.800 | (48.26)/1.900 | (43.18)/1.700 |
| 20 | 90123-0120 | 90123-0220 | (48.26)/1.900 | (50.80)/2.000 | (45.72)/1.800 |
| 21 | 90123-0121 | 90123-0221 | (50.80)/2.000 | (53.34)/2.100 | (48.26)/1.900 |
| 22 | 90123-0122 | 90123-0222 | (53.34)/2.100 | (55.88)/2.200 | (50.80)/2.000 |
| 23 | 90123-0123 | 90123-0223 | (55.88)/2.200 | (58.42)/2.300 | (53.34)/2.100 |
| 24 | 90123-0124 | 90123-0224 | (58.42)/2.300 | (60.96)/2.400 | (55.88)/2.200 |
| 25 | 90123-0125 | 90123-0225 | (60.96)/2.400 | (63.50)/2.500 | (58.42)/2.300 |
| 26 | 90123-0126 | 90123-0226 | (63.50)/2.500 | (66.04)/2.600 | (60.96)/2.400 |
| 27 | 90123-0127 | 90123-0227 | (66.04)/2.600 | (68.58)/2.700 | (63.50)/2.500 |
| 28 | 90123-0128 | 90123-0228 | (68.58)/2.700 | (71.12)/2.800 | (66.04)/2.600 |
| 29 | 90123-0129 | 90123-0229 | (71.12)/2.800 | (73.66)/2.900 | (68.58)/2.700 |
| 30 | 90123-0130 | 90123-0230 | (73.66)/2.900 | (76.20)/3.000 | (71.12)/2.800 |
| 31 | 90123-0131 | 90123-0231 | (76.20)/3.000 | (78.74)/3.100 | (73.66)/2.900 |
| 32 | 90123-0132 | 90123-0232 | (78.74)/3.100 | (81.28)/3.200 | (76.20)/3.000 |

NOTES:

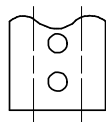
- MATERIAL: POLYPHENYLENE OXIDE 94 VI
COLOUR BLACK.
- BUTTONS ARE LOCATED BETWEEN
CIRCUITS 1 & 2 AND N-1 & N
(WHERE N IS THE NUMBER OF CIRCUITS)
- PART NO. AND CAVITY I.D. TO BE (1.00)/.040 HIGH
AND RAISED (0.07)/.003 IN A (0.15)/.006 DEEP WELL
- PRODUCT SPECIFICATION: PS-99020-0001

90123 - 0 * * *
INDICATES No. OF CIRCUITS
INDICATES NO. OF BUTTONS.
1 - 2 BUTTONS
2 - 4 BUTTONS

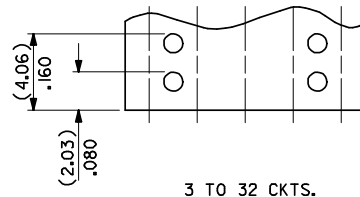
90123 - 9 9 * *
VOIDED OPTIONS, PER SHT 2.

2 CKTS ONLY.

2 POLARISING BUTTON VERSION



2 CKTS ONLY.



4 POLARISING BUTTON VERSION

| ADDED NOTE 4 EC NO: E2008-0466 DRAWN: K I ERMAN 2008/03/12 CHKD: 2008/03/18 APPR: B MAGUIRE 2008/03/18 | QUALITY SYMBOLS | GENERAL TOLERANCES (UNLESS SPECIFIED) | DIMENSION STYLE | SCALE | DESIGN UNITS | THIRD ANGLE PROJECTION | | | | | | | | | | | | | | |
|--|--------------------------|--|-----------------|---|---|------------------------|------|------|----------|------|-------|----------|-------|------|---------|------|------|-------|-----|--------|
| | $\nabla=0$ $\nabla=0$ | <table border="1"> <tr><th colspan="2">mm</th><th>INCH</th></tr> <tr><td>4 PLACES</td><td>±---</td><td>±---</td></tr> <tr><td>3 PLACES</td><td>±---</td><td>±.004</td></tr> <tr><td>2 PLACES</td><td>±0.10</td><td>±---</td></tr> <tr><td>1 PLACE</td><td>±---</td><td>±---</td></tr> </table> | mm | | INCH | 4 PLACES | ±--- | ±--- | 3 PLACES | ±--- | ±.004 | 2 PLACES | ±0.10 | ±--- | 1 PLACE | ±--- | ±--- | MM/IN | 5:1 | METRIC |
| mm | | INCH | | | | | | | | | | | | | | | | | | |
| 4 PLACES | ±--- | ±--- | | | | | | | | | | | | | | | | | | |
| 3 PLACES | ±--- | ±.004 | | | | | | | | | | | | | | | | | | |
| 2 PLACES | ±0.10 | ±--- | | | | | | | | | | | | | | | | | | |
| 1 PLACE | ±--- | ±--- | | | | | | | | | | | | | | | | | | |
| REV | DESCRIPTION | ANGULAR ±1/2° | DRAWN BY | DATE | TITLE | | | | | | | | | | | | | | | |
| | | | DB | | C-GRID III SINGLE ROW MODULAR CRIMP CONNECTOR HOUSING | | | | | | | | | | | | | | | |
| | | | CHECKED BY | DATE | | | | | | | | | | | | | | | | |
| | | | J DENNEHY | 2006/05/22 | | | | | | | | | | | | | | | | |
| | | | APPROVED BY | DATE | | | | | | | | | | | | | | | | |
| | | | J DENNEHY | 2006/05/22 | | | | | | | | | | | | | | | | |
| | | | MATERIAL NO. | DOCUMENT NO. | | | | | | | | | | | | | | | | |
| | | | SEE CHART | SD-90123 | | | | | | | | | | | | | | | | |
| | | | SIZE | THIS DRAWING CONTAINS INFORMATION THAT IS PROPRIETARY TO MOLEX INCORPORATED AND SHOULD NOT BE USED WITHOUT WRITTEN PERMISSION | | | | | | | | | | | | | | | | |
| | | | A2 | | | SHEET NO. 1 OF 2 | | | | | | | | | | | | | | |